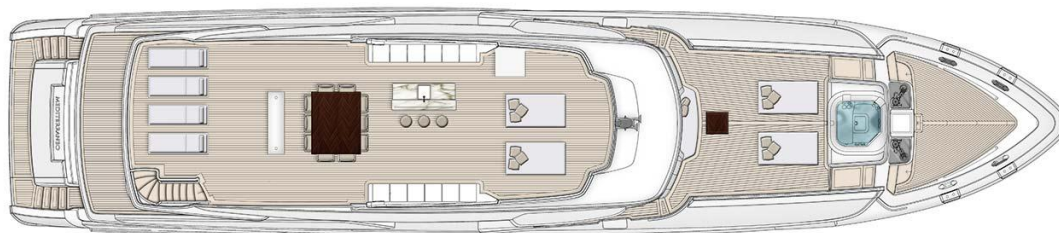




MR. LOUI LTD.
REPORT "MR. LOUI" VIAREGGIO" JUNE 30TH, 2017

M/Y "MR. LOUI"

SUN DECK



- CONTINUED WITH POLISH AND REPAIR DETAILS OF PAINT ON SUPERIOR AND INFERIOR STRUCTURE ON SUN DECK AND INSTALL DOORS AND ACCESORIES.



- WAS INSTALLED SUNROOF.



- WAS INSTALLED PLEXIGLASS.





MR. LOUI LTD.

M/Y “MR. LOUI”

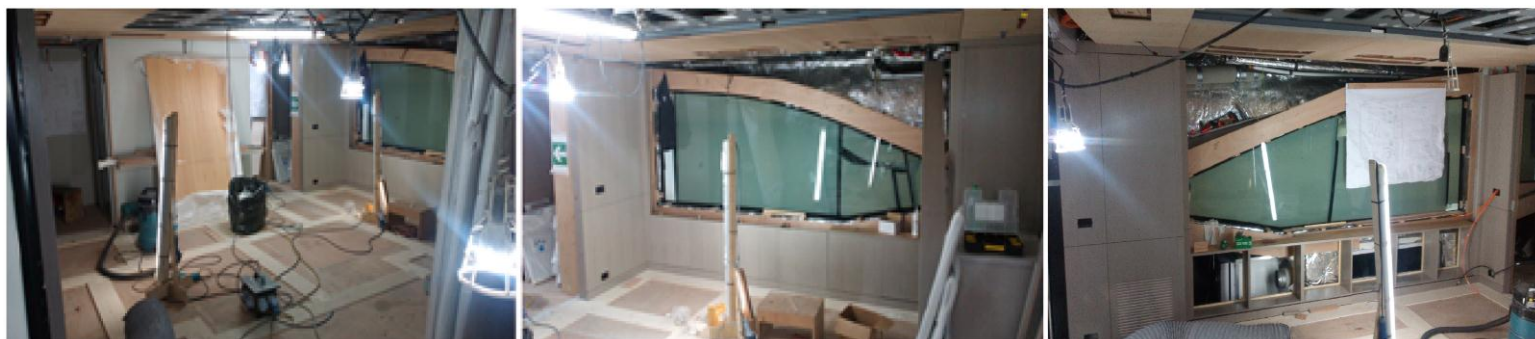
UPPER DECK



- CONTINUED JOBS ON MANUFACTURED OF STAIRS HANDLES FROM **UD** TO **SD**.



- CARPENTRY JOBS ON SALON.



- CONTINUED OF CARPENTRY JOBS ON CAPITAN CABIN.



MR. LOUI LTD.

M/Y “MR. LOUI”



MAIN DECK



- WAS RECEIVED STAIRS HANDLES FROM **MD** TO **UD**, READY TO INSTALL.



- CONTINUE WITH INSTALLATION OF TEAK STEPS ON AFT STAIRS TO **UD**.





MR. LOUI LTD.

M/Y "MR. LOUI"

- CONTINUE TO INSTALL FLOOR AND TOP ON MAIN SALON.



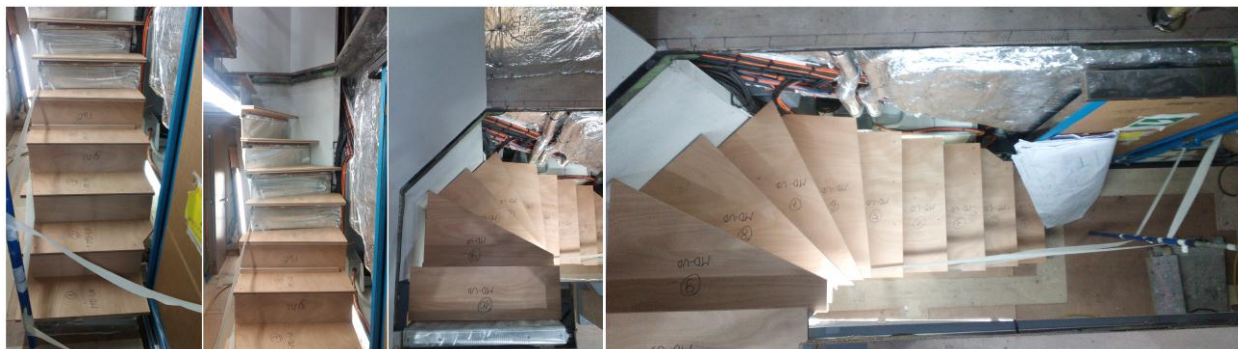
- IN GALLEY WAS STARTED TO INSTALL FLOOR.



- MASTER CABIN CONTINUE WITH TOUCH UP, REPAIR DETAILS AND WAS TESTED ALL LIGHTS.



- START WITH INTERIOR STEPS ON MAIN DECK TO UPPER DECK.





MR. LOUI LTD.

M/Y “MR. LOUI”

- START WITH INTERIOR STEPS ON MAIN DECK TO LOWER DECK.



LOWER DECK



GUEST AND TWIN CABINS

- CONTINUED TO INSTALL MARMOL ON BATHROOMS.

GUEST CABINS

TWIN CABINS





MR. LOUI LTD.

M/Y “MR. LOUI”

CREW CABINS AND CREW MESS

- START CARPENTRY JOBS ON CREW MESS



- WAS INSTALLED WASHER AND DRIER MACHINE ON CREW MESS AND ENGINEER CABIN.

WASHER & DRIER MACHINES



GARAGE

- IN GARAGE WAS PAINTED INSIDE THE BILGES.



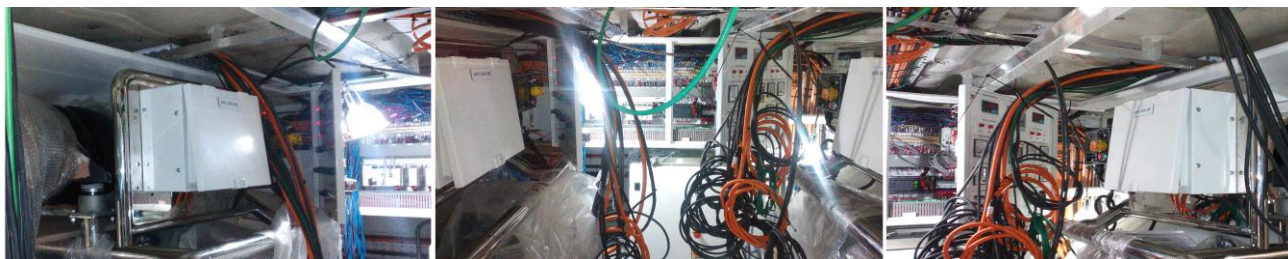


MR. LOUI LTD.

M/Y “MR. LOUI”

ENGINE ROOM

- CONTINUED WITH CONNETING WIRES AND CABLES ON ELECTRIC PANELS.



- SHORE LINE WAS CONNECTED TO MAKE TEST FOR DIFFERENTS EQUIPMENTS AS HYD. SYST. FOR GARAGE DOOR, AFT PASSARELA, FANS COILS ARROUND MAIN DECK AND LOWER DECK, (MAIN SALON, MASTER CABIN, GUEST AND TWIN CABIN ARE WORKING ONLY BLOWERS).



- WAS INSTALLED GENERATOR FUEL FILTERS.

GENERATOR FUEL OIL FILTER SB PS



- WAS RECEIVED DIAMOND PLATES.



MR. LOUI LTD.

M/Y “MR. LOUI”



HULL AND PROPULTION

- WAS INSTALLED BENETTI DESIGN ON BOTH SIDES.



- START TO INSTALL STRUCTURE FOR ENGINE EXHAUST GASES, UNDER HULL.

PS SB





MR. LOUI LTD.

M/Y "MR. LOUI"

- WAS INSTALLED ANCHOR CHAIN DUCTS.

