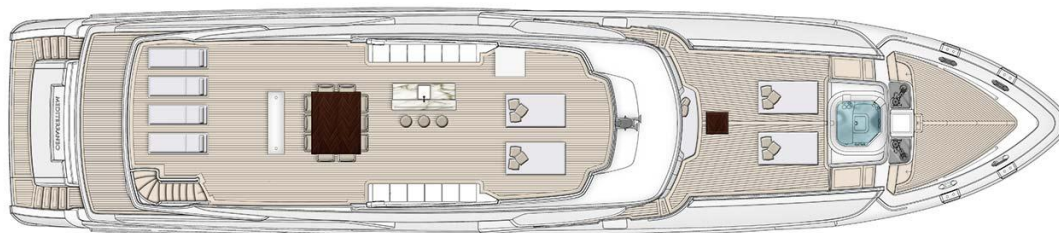




MR. LOUI LTD.
REPORT "MR. LOUI" VIAREGGIO" JUNE 16TH., 2017

M/Y "MR. LOUI"

SUN DECK



- WAS PAINTED ON INFERIOR STRUCTURE ON SUN DECK.



UPPER DECK





MR. LOUI LTD.

M/Y "MR. LOUI"

- WAS FIXED TOP STRUCTURE ON AFT UPPER DECK, CORRECTION OF PROPERLY LEVELING, SUGGESTED BY SURVEYOR JUAN.



- CARPENTRY JOBS ON SALON AND BATHROOM



- PILOT HOUSE, CONTINUE CONNECTED WIRES AND CABLES ON ELECTRIC PANELS.
- CONTINUED OF CARPENTRY JOBS ON CAPITAN CABIN.



- WAS PAINTED ON BOW DECK.





MR. LOUI LTD.

M/Y "MR. LOUI"

- CONTINUE INSTALLING TEAK ON JACUZZI AND STEPS.



MAIN DECK



- AFT DECK, CONTINUED JOBS ON INSTALLATION OF STAIRS HANDLES.



- CONTINUED CARPENTRY JOBS IN SALON ROOM, GALLEY AND MASTER CABIN ON TOP COVERS.

MAIN SALON





MR. LOUI LTD. MASTER CABIN

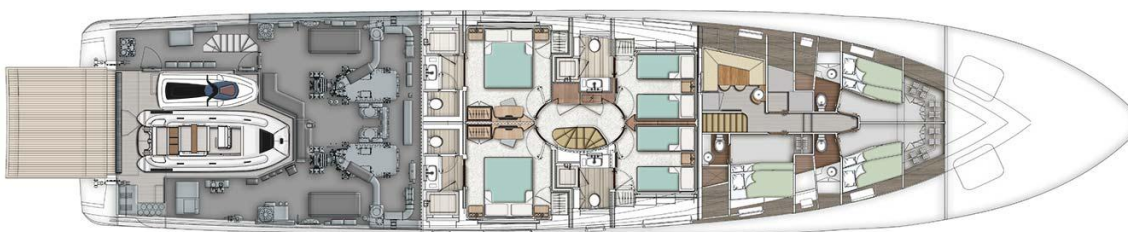
M/Y “MR. LOUI”



GALLEY

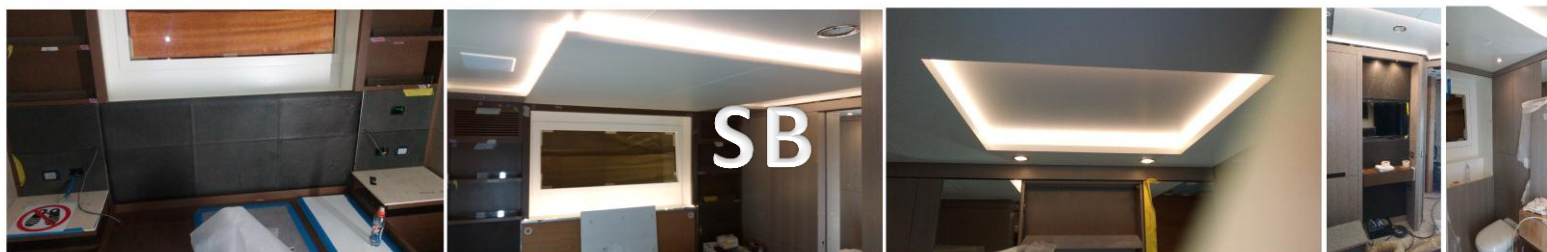


LOWER DECK



GUEST CABINS

- WAS FINISHED WITH CARPENTRY JOS, WAS MOUNTED DITAILS, TV'S AND TESTED LIGHTS.





MR. LOUI LTD.

M/Y "MR. LOUI"



TWIN CABINS

- WAS FINISHED WITH CARPENTRY JOS, WAS MOUNTED DITAILS AND TESTED LIGHTS.



CREW CABINS

- CONTINUE CARPENTRY JOBS AND INSTALLED OF FAN COILS.

ENGINEER CABIN



SB CREW CABIN





MR. LOUI LTD.
PS CREW CABIN

M/Y “MR. LOUI”



GARAGE

- IN GARAGE DOOR, CONTINUED WITH CARPENTRY JOBS AND DETAILS JOBS ON GAREGE SEAL DOOR.



ENGINE ROOM

- CONTINUED WITH INSTALLATION OF ELECTRICAL PANELS, CONNETING WIRES AND CABLES.

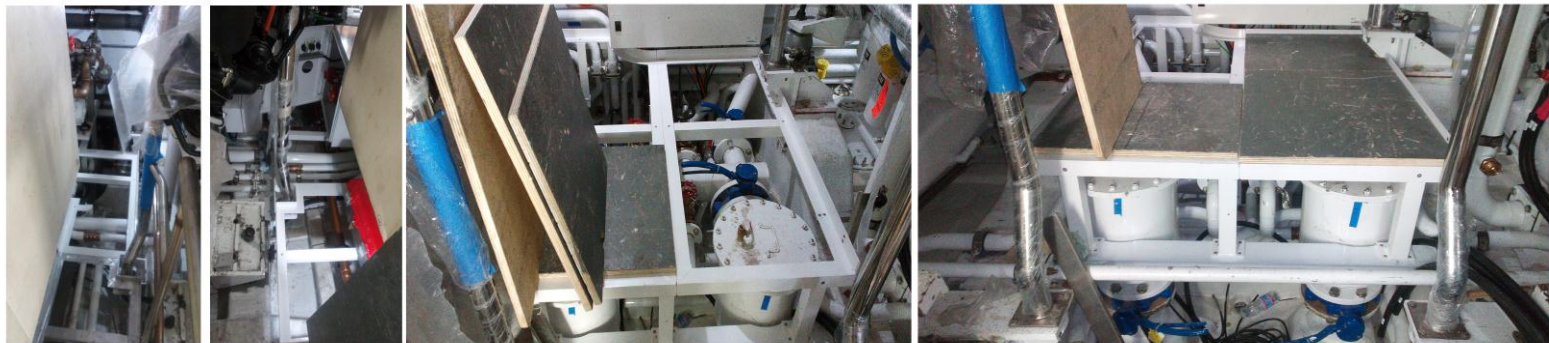




MR. LOUI LTD.

M/Y “MR. LOUI”

- COUNTINUED MOUNTED STRUCTURES OF SUPPORTS PLATES.



HULL AND PROPULTION

- WAS POLISH AND APPLIED PROTECTIVE PAINT AT PROPELLERS AND RUDDERS.

