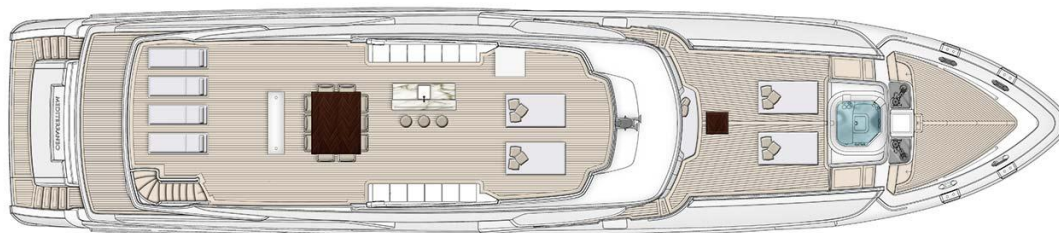




MR. LOUI LTD.
REPORT "MR. LOUI" VIAREGGIO" JULY 21TH, 2017

M/Y "MR. LOUI"

SUN DECK



- CONTINUED WITH POLISH AND REPAIR DETAILS OF PAINT ON SUN DECK, INSTALLING BAR TABLE, BARBECUE TABLE, DOORS AND ACCESORIES.



- INSTALLATION OF ELECTRIC PISTONS FOR ELEVATOR DOOR.



- CONTINUE WITH DETAILS ON TEAK DECK.





MR. LOUI LTD.

M/Y “MR. LOUI”

UPPER DECK



- CONTINUE WITH CARPENTRY JOBS ON SALON.



- START TO INSTALL FLOOR IN SALON.



- CONTINUE DETAILS ON TEAK DECK.



- CONTINUE INSTALLING WOOD FURNITURES OF PILOT HOUSE EQUIPMENT.





MR. LOUI LTD.

M/Y “MR. LOUI”

- START TO INSTALL PROPERLY 60HZ. JACUZZI PUMPS.



MAIN DECK



- CONTINUE WITH REPAINT AND FIX DETAILS ON AROUND ALL AFT DECK.



- FINISHED TO INSTALL FLOOR, ON MAIN SALON.



- START TO INSTALL SOME PIECES OF MARBLE ON MAIN SALON.

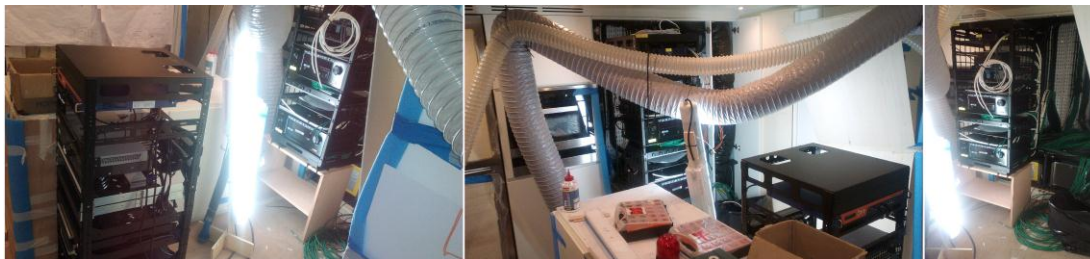




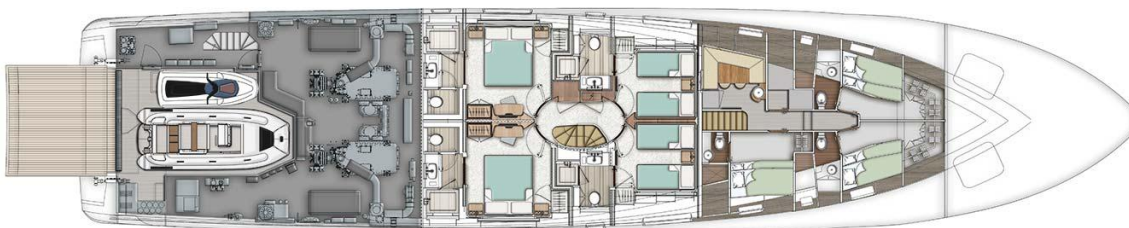
MR. LOUI LTD.

M/Y “MR. LOUI”

- START TO INSTALL TV AND AUDIO RACK, ON THE GALLEY .



LOWER DECK



- START CARPENTRY JOBS IN VIP LOBBY

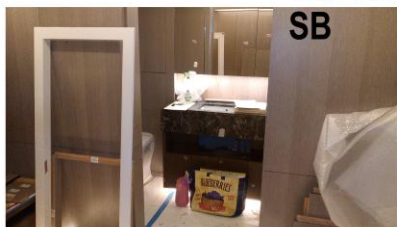


VIP CABINS

- CONTINUE JOBS ON BATHROOMS, INSTALLING MARBLE AND GLASS DOORS.

GUEST CABINS

SB



PS



TWIN CABINS

SB



PS





MR. LOUI LTD.
CREW MESS

M/Y "MR. LOUI"

- CONTINUE WITH CARPENTRY JOBS.



- START CARPENTRY JOBS ON STAIRS TO CREW DECK.



ENGINE ROOM

- CONTINUE TO INSTALLING ROOF CELING.



- START TO INSTALL GAUGES AND 8 MM. PIPING OF ALL PUMPS.





MR. LOUI LTD.
HULL AND PROPULSION

M/Y “MR. LOUI”

- START TO MANUFACTURED SHAFT SEAL PROTECTIONS, ON BOTH SIDES.

